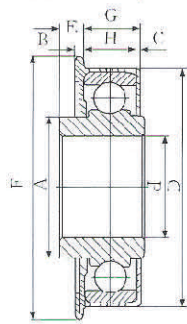
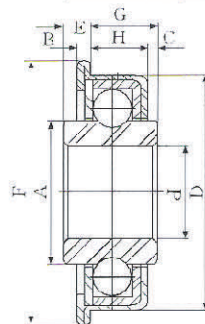


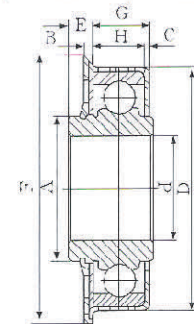
轴承代号 Bearing No.	尺寸 Dimensions (mm)							负荷 Rating (KN)
	D1	D2	d	F	B	C	H	
GF6001	50	47.7	12		19		14	100
GF6001-1	60	56.2	12		19		14	100
GF6002	48.2	45.3		11.4	13.82	13.16	10.7	150
GF6202	60	55	15		20		16	150
GF6204	76	72	20		26		22	250
GF6204-1	80	76	20		26		22	250



PBW-A



PBW-B



PBW-C

轴承代号 Bearing No.	尺寸 Dimensions (mm)									球 Ball		备注 Remark
	D	d	E	F	B	C	H	G	R	No.	DIA.	
PBW-A1	23	11.2	3	26	2	0.8	6.35			16	1/8	
PBW-A2	28.6	12.7	3	32	2	0.8	7.8			13	3/16	
PBW-A3	35	20	3.2	38	2	0.8	9.8			20	5/32	
PBW-A3	50.8	25.6	4.75	54	2	0.8	11.1			19	1/4	
PBW-B1	28.6	9.7	3.5	32	2	2	7.8	17.5		13	3/16	
PBW-B2	35	16	6	38	2	3	9.8	12		20	5/32	
PBW-C1	30.4	10.1	4	33	2	0.8	7.6	8.1		14	3/16	
PBW-C2	47	20.1	4.7	51.8	2	0.8	10.9	11.7		17	1/4	